

HDPE Piping System

Built for Pressure. Engineered for Performance.

Our HDPE Piping System is crafted from **virgin PE100-grade material**, designed to meet the rigorous demands of **agriculture, borewell, mining, and industrial water conveyance**.

Compliant with **IS 4984:2016** and **ISO 4427:2016**, it guarantees high-pressure performance and long-term durability.

Key Features

- **Material:** Virgin PE100 HDPE
- **Sizes:** 20 mm – 800 mm
- **Pressure Ratings:** PN 2.5 to PN 25
- **Lengths:** Coils (20–90 mm); 6-meter pipes (above 90 mm)
- **Color:** UV-resistant black
- **Joining Options:** Butt welding, electrofusion

Applications

- Agricultural irrigation (high-pressure)
- Borewell and potable water systems
- Mining slurry and industrial effluent pipelines



Key Advantages

- **Material Options:** Fabricated and injection molded using virgin PE100 grade HDPE for long-term strength and reliability.
- **Customization:** Wide range of sizes and shapes to suit diverse layout needs.
- **Performance:** Designed for high-pressure performance and resistance to corrosion, impact, and environmental stress.
- **Compatibility:** Fully compatible with Gumar HDPE pipes and standard jointing techniques.

Web/App Design Notes

- **Visual Representation:** Display HDPE pipes in various sizes and use-case scenarios (e.g., agriculture, mining, borewell).
- **Size & Pressure Info:** Clearly present the complete range of sizes (20 mm to 800 mm) and pressure ratings (PN 2.5 to PN 25).
- **Application Icons:** Add intuitive icons for agriculture, water supply, borewells, and industrial sectors.
- **Technical Specifications:** Provide downloadable spec sheets and interactive diagrams outlining pipe specs and jointing techniques.
- **Installation Guides:** Offer detailed guides or video tutorials for butt welding and electrofusion processes.

Fittings & Accessories

Precision-Crafted Connections for Complex Piping Layouts

Available Fittings & Variants

- **Bends & Elbows**



45° Bend – Fabricated



45° Elbow – Injection Molded



90° Bend – Fabricated



90° Elbow – Injection Molded

- **Tees**



Equal Tee - Fabricated



Equal Tee- Moulded



Unequal Tee - Moulded



Unequal Tee - Fabricated

- **Y-Fittings**



Y - Fabricated



Y - Moulded



Long Neck Stub End – Injection Molded (Available from 63 mm to 800 mm)

- Designed for flange jointing in high-pressure systems.
- **Material Requirements:** Compatible with GI, MS, and DI flanges. Requires nuts, bolts, and cascades for secure assembly.
- **Pressure Rating:** Varies based on system design.



HDPE Coupling/Socket (Sizes: 110 mm to 800 mm)

- Designed for butt welding or electrofusion jointing.
- **Pressure Rating:** Varies by specification.
- **Installation Tools Required:** Simple or hydraulic jointing machines.

Rainwater Harvesting System

Smart Rain Capture. Sustainable Tomorrow.

Gumar's Rainwater Harvesting System is a comprehensive, high-performance rooftop water collection solution. It is designed to efficiently capture, channel, and store rainwater from roofing structures in both residential and commercial settings. This system includes a full suite

of precision-engineered pipes, fittings, and accessories that seamlessly integrate with a variety of building types.

Constructed using premium-quality PVC, the system provides exceptional durability and resistance against corrosion, chemicals, and UV exposure. Its modular and lightweight design ensures easy installation and minimal maintenance, encouraging environmentally responsible water management.

Key Features

- **Material:** Manufactured from high-grade PVC, resistant to corrosion, chemical wear, and UV degradation.
- **Design:** UV-stabilized body with a smooth inner surface to optimize water flow and ensure long-term reliability outdoors.
- **Jointing System:** Features secure, leak-proof connections using elastomeric rubber seals and solvent cement joints.
- **Aesthetic Appeal:** Lightweight, clean, and streamlined design enhances the appearance of any installation.

Applications

- **Residential:** Perfect for rooftops of individual houses and bungalows.
- **Commercial:** Ideal for use in warehouses, factories, commercial complexes.
- **Public Infrastructure:** Effective for structures such as school buildings, parking sheds, and institutional roofs.
- **Rainwater Storage:** Efficient system for harvesting and directing water into storage tanks.



Key Benefits

- **Material Quality:** Manufactured from high-grade PVC, offering resistance to UV degradation and environmental wear.
- **Ease of Use:** Snap-fit and clamp-based mechanisms ensure quick, hassle-free installation.
- **System Compatibility:** Tailored to work seamlessly with Gumar's rainwater harvesting pipes and storage solutions.
- **Clean Aesthetics:** Smooth finish and compact form support neat installations with minimal visual impact.

Web/App Design Notes

- **Visual Representation:** Use accurate color tones in product images to reflect the typical hues of the components.
- **Size & Pressure Info:** Highlight available size (e.g., 180 mm) for easy customer reference.
- **Application Icons:** Incorporate intuitive icons for residential, commercial, and public infrastructure to enhance UX.
- **Technical Specifications:** Provide downloadable PDFs or interactive charts with details on product specs and jointing methods.
- **Installation Guides:** Offer step-by-step visual guides or instructional videos for installation assistance.

Fittings & Functional Components



Clamp : Secure mounting accessories used to fix pipes and fittings firmly against walls or support structures.



Support Bracket : Reinforcement bracket that provides additional stability and load-bearing support for horizontal or vertical pipe sections.



Single Socket Elbow : A directional fitting used to change the direction of water flow in the pipeline. The socket end allows easy jointing with downpipes.



Stop End Outlet (With 1 Clamp) : Serves as a terminating point in the rainwater gutter system, allowing water outlet and sealing the end section. Includes an integrated clamp for secure fastening.

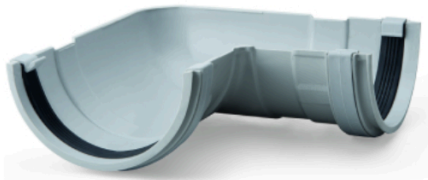


Short Stop End: A compact fitting used to close off open ends of the rainwater gutter, preventing overflow or leakage.



90° Elbow (With Outlet) (With 2 Clamps) :

Allows a right-angle turn in the rainwater pipe system with an additional outlet for branching or redirecting flow. Comes with two clamps for secure attachment.

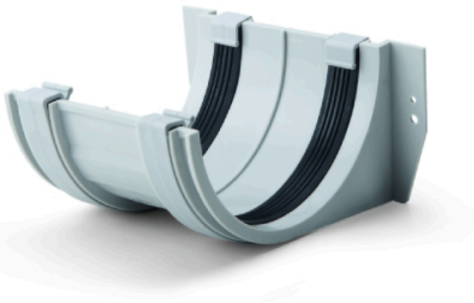


90° Elbow (Without Outlet) (With 2 Clamps): Enables

a 90-degree turn in pipe routing while maintaining streamlined flow. Two clamps included for stable installation.



Running Outlet (With 2 Clamps) : Designed to connect the gutter to the downpipe, facilitating uninterrupted water transfer from roof edge to ground level. Supplied with two clamps for rigid support.



Joint Bracket (With 2 Clamps): A connection support that securely joins two gutter sections while maintaining structural integrity. Includes dual clamps for reinforcement.



Rain Gutter : The primary channel that captures and directs rainwater from rooftops into the downpipe system. Designed for high flow capacity and long-term UV stability.

Water Storage Tanks

Safe Water. Stored Right.

Gumar Water Tanks offer hygienic, UV-stabilized, and long-lasting water storage solutions made from food-grade LLDPE. Available in double and triple-layer variants.

Key Features:

- **Material:** High-quality, food-safe polyethylene
- **UV Protection:** Prevents degradation and algae growth
- **Design:** Seamless, leak-proof body; smooth inner surface
- **Lid Options:** Threaded or snap-fit for secure closure
- **Capacity Options:** 500L, 1000L, 2000L, 3000L, 5000L

Applications:

- Homes, apartments, commercial buildings
- Agricultural and industrial use
- Public institutions and emergency reserves





Web/App Design Notes

- **Visual Representation:** Showcase tanks in standard color variants (e.g., black, white, blue, green) in relevant settings like rooftops or farms.
- **Size & Capacity Info:** Clearly display common capacities (500L, 1000L, 2000L, 3000L, 5000L) using comparison visuals or charts.
- **Application Icons:** Use sector-specific icons to show suitability for residential, commercial, industrial, and emergency use.
- **Technical Specifications:** Include downloadable datasheets with details like tank dimensions, wall thickness, inlet/outlet sizes, and load ratings.
- **Comparison Diagram:** Add side-by-side comparisons highlighting Gumar tank advantages over competitors.
- **Installation Guides:** Provide visual installation instructions, showing placement, fittings, and maintenance best practices.

Agri-PVC Piping System

Reliable Water Conveyance for Agriculture & Industrial Needs

Gumar's PVC Piping System is a specialized solution engineered for agricultural and water distribution applications. Designed with robust performance in mind, the system includes a full range of unplasticized polyvinyl chloride (UPVC) pipes and fittings that meet IS:4985 standards, ensuring optimal strength, durability, and hydraulic efficiency.

Ideal for use in irrigation, hydroponics, and slurry transport, the Aquafit system is made from premium-grade resin, providing exceptional resistance to chemicals, corrosion, and UV degradation. Its lightweight nature enables quick installation and handling on-site, while its structural integrity supports efficient and sustained water flow.

Key Features

- **Material & Construction:** Made from high-quality UPVC, ensuring resistance to UV rays, chemical exposure, and corrosion.
- **Pressure Ratings:** Available in multiple pressure classes to suit diverse application needs (2.5 to 16 Kg/cm²).
- **Size Range:** Pipes from 50 mm to 110 mm in diameter; fittings up to 110 mm.
- **Jointing Method:** Utilizes solvent cement joints for a secure, leak-proof connection.
- **Color & Length:** Standard light grey color with lengths from 1.5 to 3 meters for easier identification and application.

Applications

- **Agricultural Water Supply:** Ideal for drip, sprinkler, and surface irrigation systems (suitable for non-pressurized applications).
- **Hydroponics:** Supports modern soilless farming systems with consistent water delivery.
- **Slurry Lines:** Suitable for transporting slurry and fluids in industrial settings.



Web/App Design Notes

- **Visual Representation:** Use product imagery with the correct light grey color tone that matches Gumar Pipes branding.
- **Size & Pressure Info:** Clearly display the full size range (50 mm to 110 mm) and pressure ratings (2.5 to 16 Kg/cm²) to aid selection.
- **Application Icons:** Use intuitive icons representing agriculture, irrigation, and industrial usage.
- **Technical Specifications:** Include downloadable technical PDFs or interactive specification charts for professional users.
- **Installation Guides:** Share visual step-by-step instructions or videos showing the solvent cement jointing process.

Wastewater & Sewer Plumbing System (PVC Fittings)

Efficient Flow Management for Sanitation Systems

Gumar's Wastewater & Sewer Plumbing System offers a comprehensive range of high-quality PVC fittings designed specifically for the safe and efficient conveyance of domestic and commercial wastewater. Engineered for reliability, these fittings ensure smooth flow, leak-proof joints, and resistance to corrosion, chemicals, and everyday wear and tear.

Whether for residential drainage or municipal sewer networks, these PVC components support robust plumbing infrastructure with minimal maintenance. Manufactured with precision and conforming to industry standards, each fitting ensures a long service life in underground and above-ground applications.

Key Features

- **Material:** High-strength PVC, resistant to corrosion, chemical exposure, and environmental degradation.
- **Design:** Engineered for optimal flow dynamics, reduced clogging, and easy access where cleaning doors are provided.
- **Compatibility:** Fully compatible with standard PVC drainage and sewage piping systems.
- **Ease of Installation:** Lightweight and easy to handle, with socket ends designed for solvent weld or push-fit jointing.
- **Durability:** Long-lasting performance under varying load conditions and wastewater environments.

Applications

- **Residential Buildings:** Bathrooms, kitchens, and utility areas in homes and apartments.
- **Commercial Facilities:** Hotels, office buildings, malls, and restaurants.
- **Institutional Projects:** Schools, hospitals, public restrooms, and educational campuses.
- **Municipal Drainage:** Part of larger underground wastewater conveyance systems.



Web/App Design Notes

- **Visual Representation:** Include clear images and labeled diagrams of each fitting type (e.g., Single Y with door, Bend with door).
- **Component Categories:** Organize fittings by type (Y-joints, bends, tees) for easy browsing.
- **Application Icons:** Use icons for residential, commercial, and public sewage systems to aid understanding.
- **Technical Specifications:** Provide downloadable product datasheets with dimensions, wall thickness, and jointing methods.
- **Installation Guides:** Offer video tutorials or illustrated guides showing connection methods and inspection port use.

Product Range Includes



Clipper



Double Y With Door



Double Y (With Door / Without Door):

Enables dual branch connections with smooth flow transitions; versions with cleaning doors support convenient maintenance access.



Single Y With Door



Single Y (With Door / Without Door):

Used to create branch connections at an angle while allowing access for cleaning and maintenance where applicable.



Single T : Ideal for vertical-to-horizontal transitions in

drainage systems. Clipper T variants include inspection ports for easy servicing.



Bend 87.5°



Bend with Door (87.5°): Provides near-right-angle directional changes in pipelines with an integrated door for maintenance and debris removal.



Coupler: Connects two straight pipe sections seamlessly, ensuring secure and watertight continuity in the plumbing line.

Why Choose Gumar Pipes?

Precision-Engineered. Future-Ready.

At Gumar, we combine advanced engineering with uncompromising quality to deliver piping systems that exceed expectations across performance, reliability, and sustainability.

What Sets Us Apart:

- Built to Perform Under Pressure
- Compliant with National & International Standards

- Hassle-Free Installation and Minimal Maintenance
- Made from Environmentally Responsible Materials
- Flexible Across Agricultural, Industrial, and Infrastructure Applications
- End-to-End Technical Support for Design & Installation

Our Commitment to You:

To ensure a seamless experience, Gumar provides:

- Interactive Product Charts and Downloadable Specs
- Step-by-Step Visual Installation Guides & Videos
- Intuitive Icons and Color-Coded Applications
- Clear Size, Length & Pressure Classifications

For long-lasting, efficient, and forward-thinking piping solutions—trust Gumar Pipes. We're Pioneering the Flow of Tomorrow.